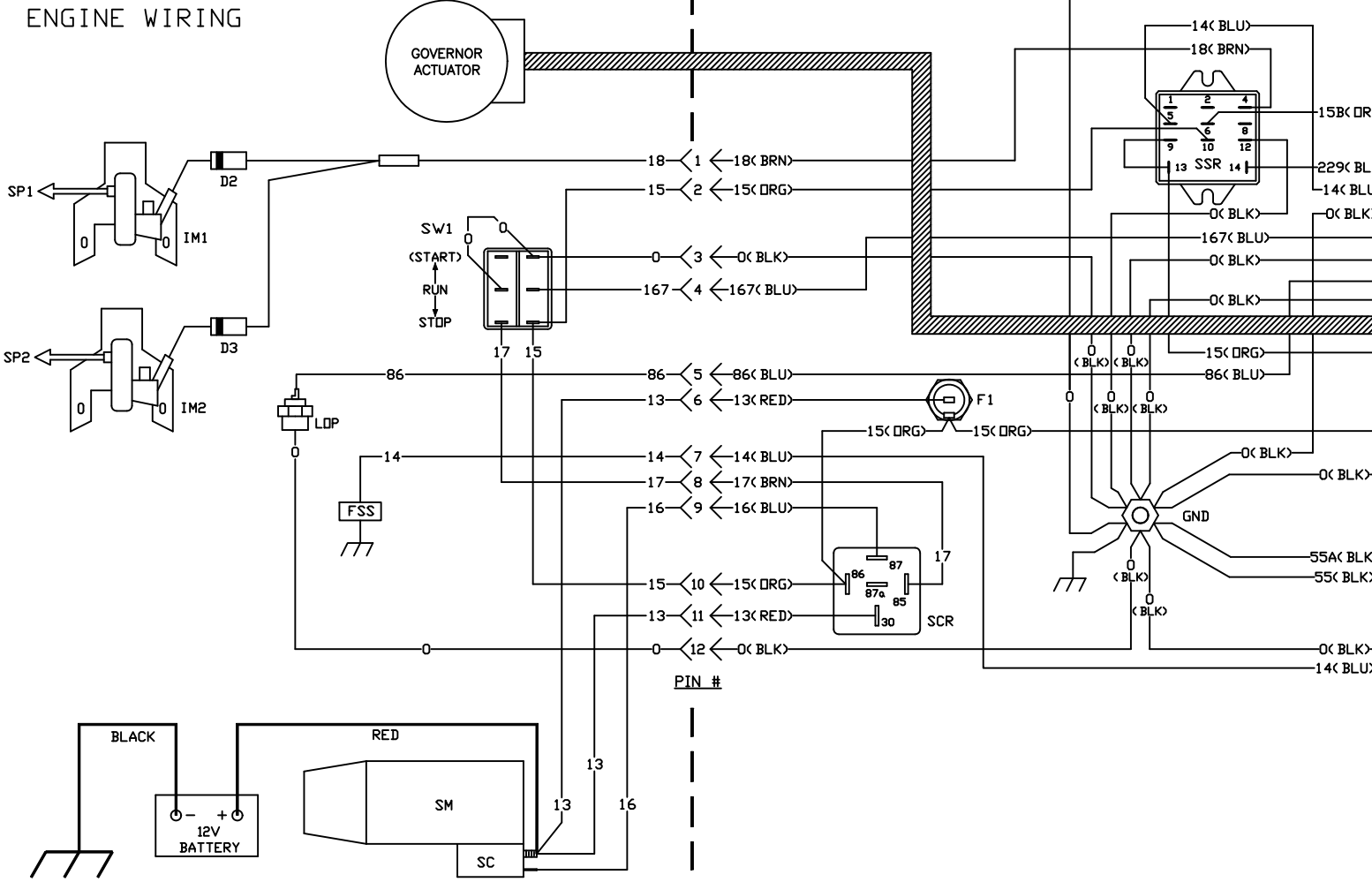
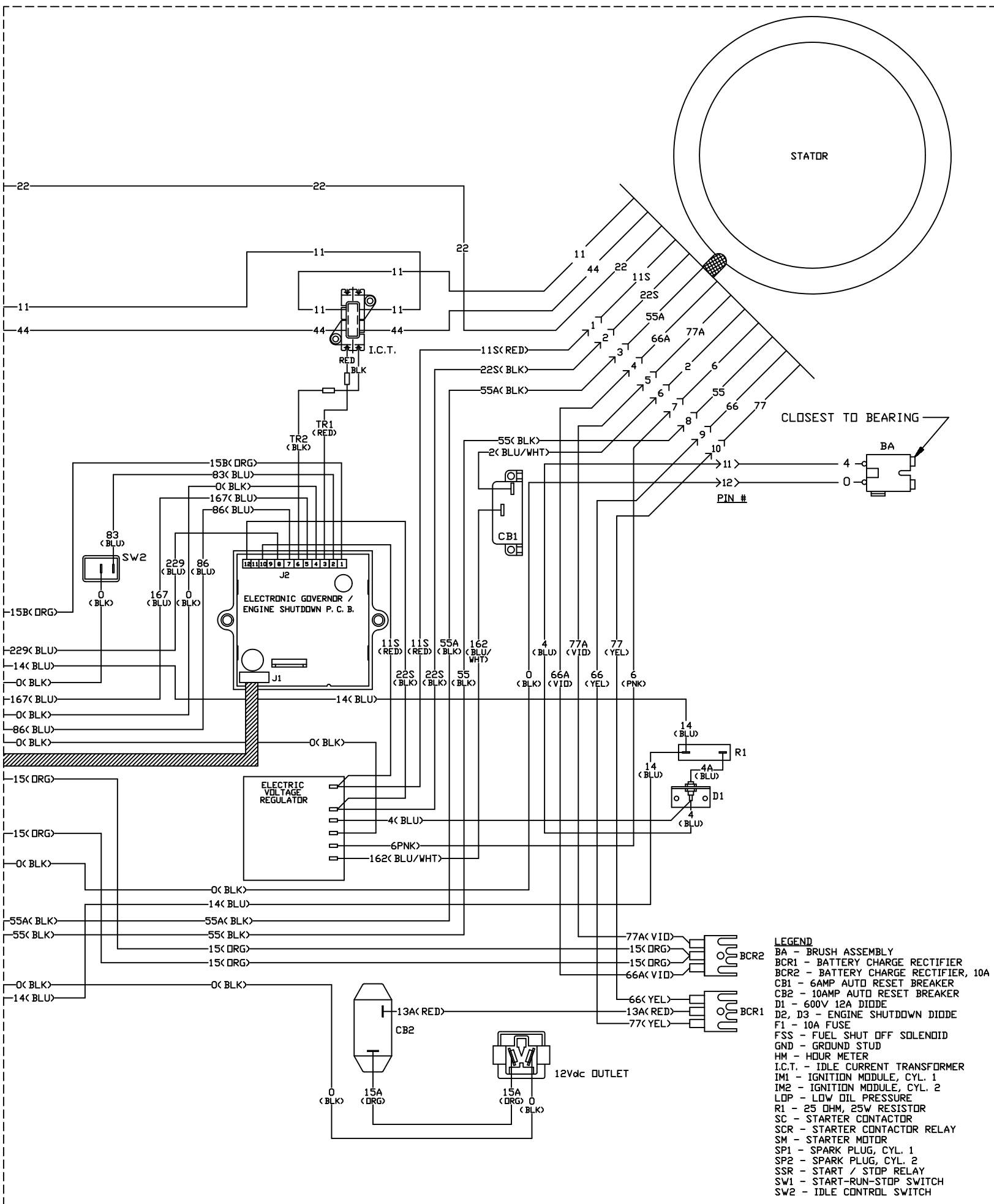


ENGINE WIRING





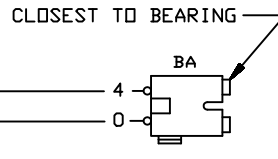
STATOR

I.C.T.

TR1 (RED)
TR2 (BLK)

ELECTRONIC GOVERNOR /
ENGINE SHUTDOWN P. C. B.

ELECTRIC
VOLTAGE
REGULATOR



- LEGEND**
- BA - BRUSH ASSEMBLY
 - BCR1 - BATTERY CHARGE RECTIFIER
 - BCR2 - BATTERY CHARGE RECTIFIER, 10A
 - CB1 - 6AMP AUTO RESET BREAKER
 - CB2 - 10AMP AUTO RESET BREAKER
 - D1 - 600V 12A DIODE
 - D2, D3 - ENGINE SHUTDOWN DIODE
 - F1 - 10A FUSE
 - FSS - FUEL SHUT OFF SOLENOID
 - GND - GROUND STUD
 - HM - HOUR METER
 - I.C.T. - IDLE CURRENT TRANSFORMER
 - IM1 - IGNITION MODULE, CYL. 1
 - IM2 - IGNITION MODULE, CYL. 2
 - LOP - LOW OIL PRESSURE
 - LOP - 25 OHM, 25W RESISTOR
 - SC - STARTER CONTACTOR
 - SCR - STARTER CONTACTOR RELAY
 - SM - STARTER MOTOR
 - SP1 - SPARK PLUG, CYL. 1
 - SP2 - SPARK PLUG, CYL. 2
 - SSR - START / STOP RELAY
 - SW1 - START-RUN-STOP SWITCH
 - SW2 - IDLE CONTROL SWITCH