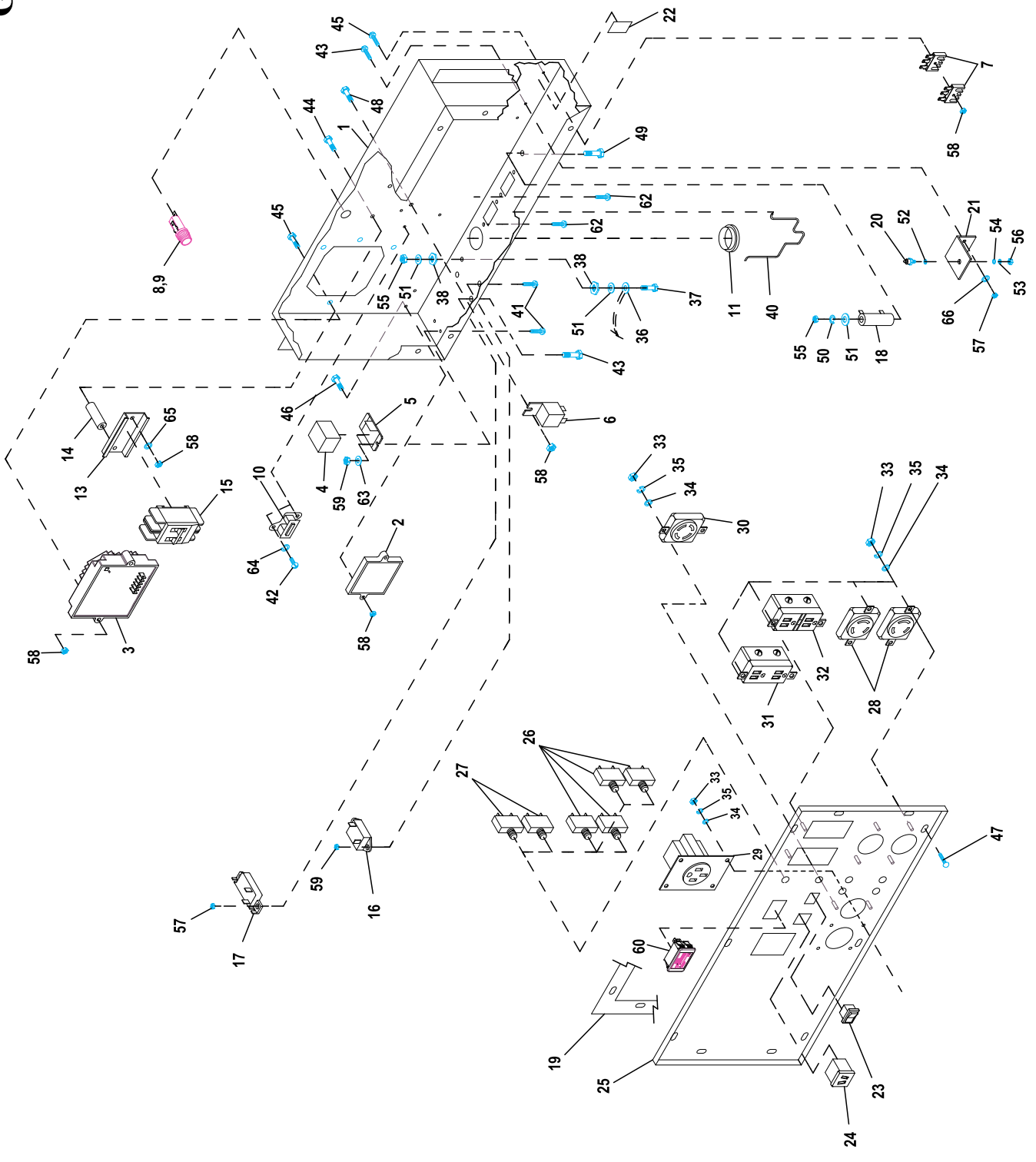


17.5KW (UP THRU SERIAL #3001959571)

Exploded View : EV CONTROL PANEL GP 15/17.5 KW
Drawing No. : 0H0732

Revision : CN-0009586-C
Date : 9/26/17



15KW AND 17.5KW (AFTER SERIAL #3001959571)

Exploded View : EV CONTROL PANEL GP 15/17.5 KW
Drawing No. : 0H0732

EXPLODED VIEW: EV CONTROL PANEL GP 15/17.5 KW

DRAWING #: 0H0732

GROUP EV

APPLICABLE TO:

ITEM	PART#	QTY.	DESCRIPTION
17.5KW (UP THRU SERIAL #3001959571)			
1	0G2890	1	CONTROL PANEL BOX
2	0D4409	1	ELECTRONIC GOVERNOR / IDLE CONTROLLER
3	0F9719	1	ASSY PCB VREG AIR COOLED
4	0F3100	1	RELAY 3PDT 12VDC
5	0F3101	1	RELAY BASE 3PDT 12VDC
6	052844	1	RELAY PNL 12VDC SPST 30A
7	065795	2	RECTIFIER-BATTERY CHARGER
8	032300	1	HOLDER FUSE
9	028578	1	FUSE 10A X AGC10
10	0D4804A	1	TRANSFORMER, IDLE CURRENT
11	023484S	1	BUSHING SNAP
12	0G2887	1	HARNES, CONTROL PANEL BACK(NOT SHOWN)
13	0D5045	1	DIN RAIL 59.5mm LONG
14	0G0923	2	SPACER .25 X .50 X 2.5
15	0D1004E	1	CIRCUIT BREAKER 50A 400V 2POLE
16	087962	1	CIRCUIT BREAKER 10A 1POLE
17	048505	1	CIRCUIT BREAKER 6A 1POLE
18	057405	1	RESISTOR 25R 5% 25W
19	0D6140	2	GASKET, PORTABLE CONTROL PANEL
20	049939	1	RECTIFIER 1N1206R
21	055444	1	HEATSINK
22	027565	A/R	TAPE ELEC UL PERMACEL
23	087968	1	SWITCH, ROCKER -/0
24	090418	1	OUTLET, 12VDC SNAP
25	0H0763	1	PANEL, SHEET METAL
26	075207A	4	CIRCUIT BREAKER 30A
27	075207	2	CIRCUIT BREAKER 20A
28	068868	2	OUTLET 30A 120V RECEPT
29	0D4969	1	OUTLET 50A 125/250V
30	043437	1	OUTLET 30A 125/250V
31	0D4968	1	OUTLET 20A 120V DPLX
32	0D4966	1	OUTLET 20A 120V GFCl
33	051715	10	NUT HEX M4-0.7
34	038150	14	WASHER FLAT #8
35	022264	10	WASHER LOCK M4
36	0742600142	1	GROUND WIRE
37	049721	1	SCREW HHC M6-1.0 X 35
38	0A1658	2	WASHER LOCK SPECIAL 1/4"
39	0D3546	1	HARNES, CONTROL PANEL FRONT(NOT SHOWN)
40	0G0615	1	SPRING RETAINER
41	090987	4	SCREW PPHM M3-0.5 X 12
42	0C1085	2	SCREW PPHM M3-0.5 X 8
43	075475	8	SCREW PPHM M4-0.7 X 10
44	077682	2	SCREW PPHM M5-0.8 X 80
45	075235	3	SCREW PPHM M5-0.8 X 30
46	0G3024	2	SCREW HHC M5-0.8 X 25
47	074908	10	SCREW HHTT M5-0.8 X 10
48	045770	1	SCREW HHC M5-0.8 X 10
49	0A2053	1	SCREW HHC M6-1.0 X 65
50	022097	1	WASHER LOCK M6 (1/4")
51	022473	3	WASHER FLAT 1/4"
52	070370	1	WASHER MICA .203
53	023897	1	WASHER FLAT #10
54	030468	1	WASHER STEP NYLON .20
55	049813	3	NUT HEX M6-1.0
56	022158	1	NUT HEX #10-32
57	0E6480	8	NUT HEX M4-0.7 NYINS
58	082025	8	NUT HEX M5-0.8 NYINS
59	0D9784	4	NUT HEX M3-0.5 NYINS
60	0H8214	1	HOUR METER w/ALERTS AC/DC
61	0H0758	1	WIRE ASM, HOUR METER(NOT SHOWN)
62	0F5458	4	SCREW HHSP #10 X 3/8 HI-LOW
63	031879	4	WASHER FLAT #4
64	043182	2	WASHER LOCK M3
65	051713	2	WASHER FLAT M5
66	043180	6	WASHER FLAT M4
67	0H1330	1	ENGINE HARNES(NOT SHOWN)

EXPLODED VIEW: EV CONTROL PANEL GP 15/17.5 KW

DRAWING #: 0H0732

GROUP EV

APPLICABLE TO:

ITEM	PART#	QTY.	DESCRIPTION
15KW AND 17.5KW (AFTER SERIAL #3001959571)			
1	0G2888	1	CONTROL PANEL BOX
2	0D4409	1	ELECTRONIC GOVERNOR / IDLE CONTROLLER
3	0F9719	1	ASSY PCB VREG AIR COOLED
4	0F3100	1	RELAY 3PDT 12VDC
5	0F3101	1	RELAY BASE 3PDT 12VDC
6	052844	1	RELAY PNL 12VDC SPST 30A
7	065795	2	RECTIFIER-BATTERY CHARGER
8	032300	1	HOLDER FUSE
9	028578	1	FUSE 10A X AGC10
10	0D4804A	1	TRANSFORMER, IDLE CURRENT
11	023484S	1	BUSHING SNAP
12	0G2887	1	HARNESS, CONTROL PANEL BACK(NOT SHOWN)
13	0D5045	1	DIN RAIL 59.5mm LONG
14	0D5734	2	SPACER .25 X .50 X 1.5
15	0D1004E	1	CIRCUIT BREAKER 50A 400V 2POLE
16	087962	1	CIRCUIT BREAKER 10A 1POLE
17	048505	1	CIRCUIT BREAKER 6A 1POLE
18	057405	1	RESISTOR 25R 5% 25W
19	0D6140	2	GASKET, PORTABLE CONTROL PANEL
20	049939	1	RECTIFIER 1N1206R
21	055444	1	HEATSINK
22	027565	A/R	TAPE ELEC UL PERMACEL
23	087968	1	SWITCH, ROCKER -/0
24	090418	1	OUTLET, 12VDC SNAP
25	0H0761	1	PANEL, SHEET METAL
26	075207A	4	CIRCUIT BREAKER 30A
27	075207	2	CIRCUIT BREAKER 20A
28	068868	2	OUTLET 30A 120V RECEPT
29	0D4969	1	OUTLET 50A 125/250V
30	043437	1	OUTLET 30A 125/250V
31	0D4968	1	OUTLET 20A 120V DPLX
32	0D4966	1	OUTLET 20A 120V GFCl
33	051715	14	NUT HEX M4-0.7
34	038150	14	WASHER FLAT #8
35	022264	14	WASHER LOCK M4
36	0742600142	1	GROUND WIRE
37	049721	1	SCREW HHC M6-1.0 X 35
38	0A1658	2	WASHER LOCK SPECIAL 1/4"
39	0D3546	1	HARNESS, CONTROL PANEL FRONT(NOT SHOWN)
40	0G0615	1	SPRING RETAINER
41	090987	4	SCREW PPHM M3-0.5 X 12
42	0C1085	2	SCREW PPHM M3-0.5 X 8
43	075475	4	SCREW PPHM M4-0.7 X 10
44	080823	2	SCREW PPHM M5-0.8 X 50
45	075235	3	SCREW PPHM M5-0.8 X 30
46	0G3024	2	SCREW HHC M5-0.8 X 25
47	074908	10	SCREW HHTT M5-0.8 X 10
48	045770	1	SCREW HHC M5-0.8 X 10
49	0A2053	1	SCREW HHC M6-1.0 X 65
50	022097	1	WASHER LOCK M6 (1/4")
51	022473	3	WASHER FLAT 1/4"
52	070370	1	WASHER MICA .203
53	023897	1	WASHER FLAT #10
54	030468	1	WASHER STEP NYLON .20
55	049813	3	NUT HEX M6-1.0
56	022158	1	NUT HEX #10-32
57	0E6480	4	NUT HEX M4-0.7 NYINS
58	082025	8	NUT HEX M5-0.8 NYINS
59	0D9784	4	NUT HEX M3-0.5 NYINS
60	0H8214	1	HOUR METER w/ALERTS AC/DC
61	0H0758	1	WIRE ASM, HOUR METER(NOT SHOWN)
62	0F5458	4	SCREW HHSP #10 X 3/8 HI-LOW
63	031879	4	WASHER FLAT #4
64	043182	2	WASHER LOCK M3
65	051713	2	WASHER FLAT M5
66	043180	8	WASHER FLAT M4
67	0H1330	1	ENGINE HARNESS(NOT SHOWN)